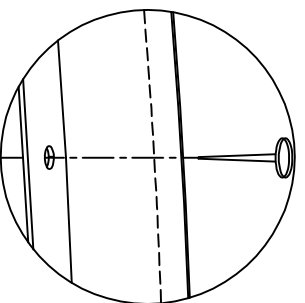
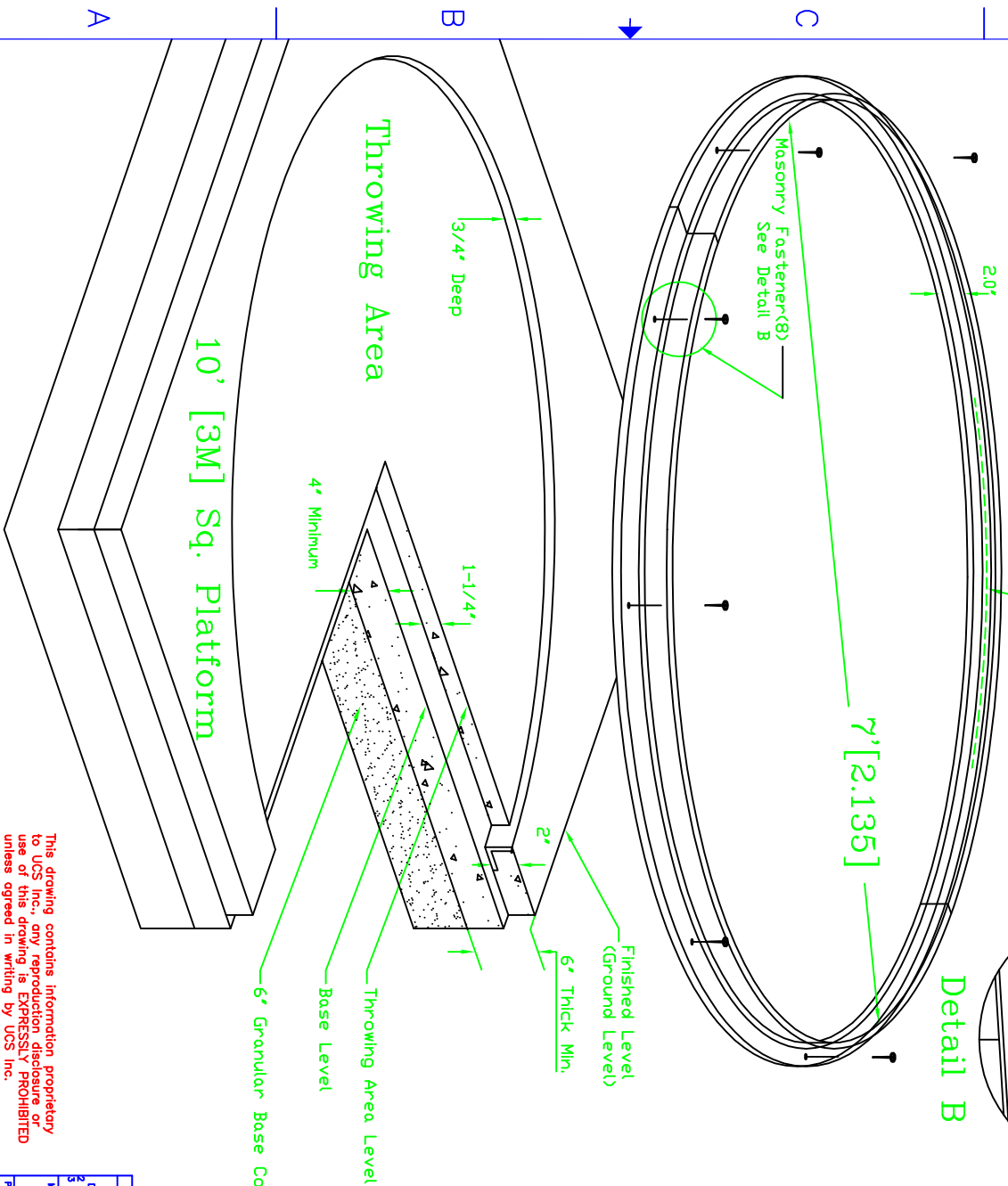


# WARNING

All rings must be measured by contractor for roundness prior installation.



Detail B



## Installation Instructions for UCS 725 Aluminum Series Rings

- 1) Pour concrete base(10'[3M] sq.) to within 2" of finished level(~4")
- 2) Center ring on 10'x10' base, check that it is level, and fasten it down through the 4 holes provided(ramset or other suitable means).
- 3) Clearly mark 3/4" down from the rim, all around on the inside of the rim. This will be the level which to float the cement on the inside.(Throwing area)
- 4) Pour cement to the marked line on the inside and pour cement flush with the rim on the outside of the ring(finished level)
- 5) Allow full cure time for cement

REVISIONS			DATE	APPROVED
ZONE	REV	DESCRIPTION		

UNLESS OTHERWISE SPECIFIED: DIMENSIONS ARE IN INCHES		CONTRACT NO.	
DETAIL TOL. ± 0.005	ANGULAR TOL. ± 1/2°	DRAWN	DATE
PLACES ± 0.005		AMBERSON	8/27/98
MATERIALS:		CHECKED	ENGINEER
PROTECTIVE FINISH:		CHECKED	
5111 HOFFMAN RD LINCOLNTON, NC, 28092		TITLE	
UCS SERIES 725 ALUMINUM		2' HAMMER RING INST.	
SCALE: NONE	FILE NO. 725AL	DWG. NO. 725-2585	REV.
SHEET 1 OF 1			

This drawing contains information proprietary to UCS Inc., any reproduction disclosure or use of this drawing is EXPRESSLY PROHIBITED unless agreed in writing by UCS Inc.