

4

3

2

1

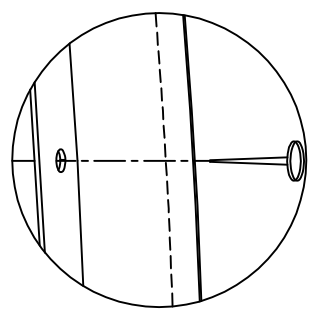
# WARNING

All rings must be measured by contractor for roundness prior installation.

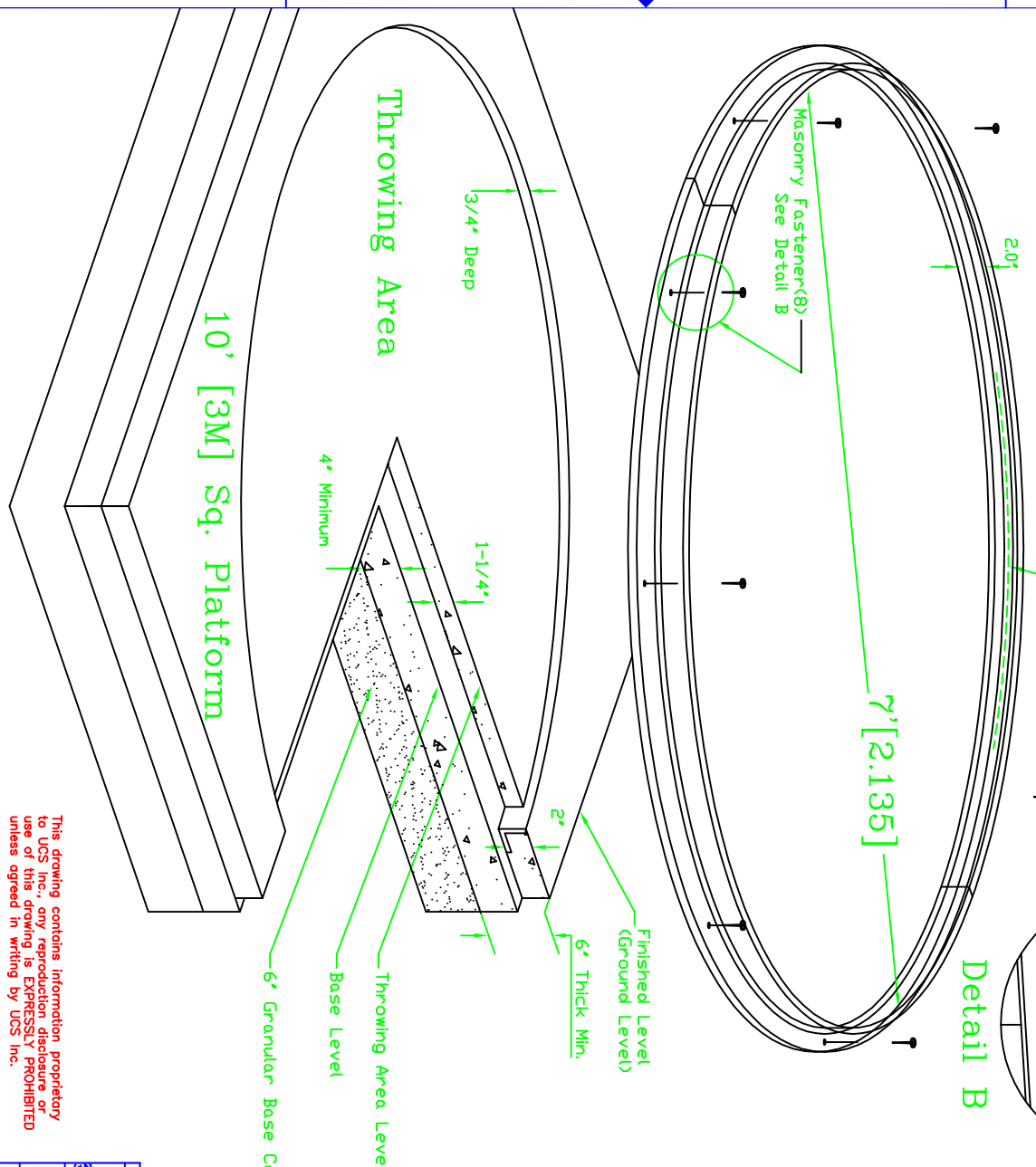
| REVISIONS |     |             |      |          |
|-----------|-----|-------------|------|----------|
| ZONE      | REV | DESCRIPTION | DATE | APPROVED |
|           |     |             |      |          |

## Installation Instructions for UCS 725 Aluminum Series Rings

- 1) Pour concrete base(10'[3M] sq.) to within 2" of finished level(~4")
- 2) Center ring on 10'x10' base, check that it is level, and fasten it down through the 4 holes provided(ramset or other suitable means).
- 3) Clearly mark 3/4" down from the rim, all around on the inside of the rim. This will be the level which to float the cement on the inside.(Throwing area)
- 4) Pour cement to the marked line on the inside and pour cement flush with the rim on the outside of the ring(finished level)
- 5) Allow full cure time for cement



Detail B



10' [3M] Sq. Platform

Throwing Area

Throwing Area Level  
 Base Level  
 6' Granular Base Course

Finished Level (Ground Level)

6' Thick Min.

3/4" Deep

1-1/4"

4' Minimum

This drawing contains information proprietary to UCS Inc., any reproduction disclosure or use of this drawing is EXPRESSLY PROHIBITED unless agreed in writing by UCS Inc.

|                            |              |              |       |                         |          |
|----------------------------|--------------|--------------|-------|-------------------------|----------|
| UNLESS OTHERWISE SPECIFIED |              | CONTRACT NO. |       | UCS 511 HOFFMAN RD      |          |
| DIMENSIONS ARE IN INCHES   |              |              |       | LINCOLNTON, NC, 28092   |          |
| DEQUAL TOL:                | ANGULAR TOL: | APPROVALS    |       | TITLE                   |          |
| 2 PLACES ± 0.010           | ± 1/2"       | DRAWN        | DATE  | UCS SERIES 725 ALUMINUM |          |
| 3 PLACES ± 0.005           |              | ENGINEER     | 12/28 | 2" SHOT RING INST.      |          |
| MATERIAL:                  |              | CHECKED      |       | SIZE                    | TILE     |
|                            |              | CHECKED      |       | C                       | 725AL    |
| PROTECTIVE FINISH:         |              |              |       | DWG NO.                 | 725-2575 |
|                            |              |              |       | SCALE                   | NONE     |
|                            |              |              |       | SHEET 1 OF 1            |          |

A

B

C

D

A

B

C

D

4

3

2

1