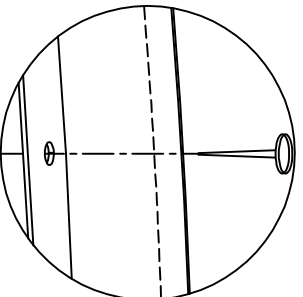
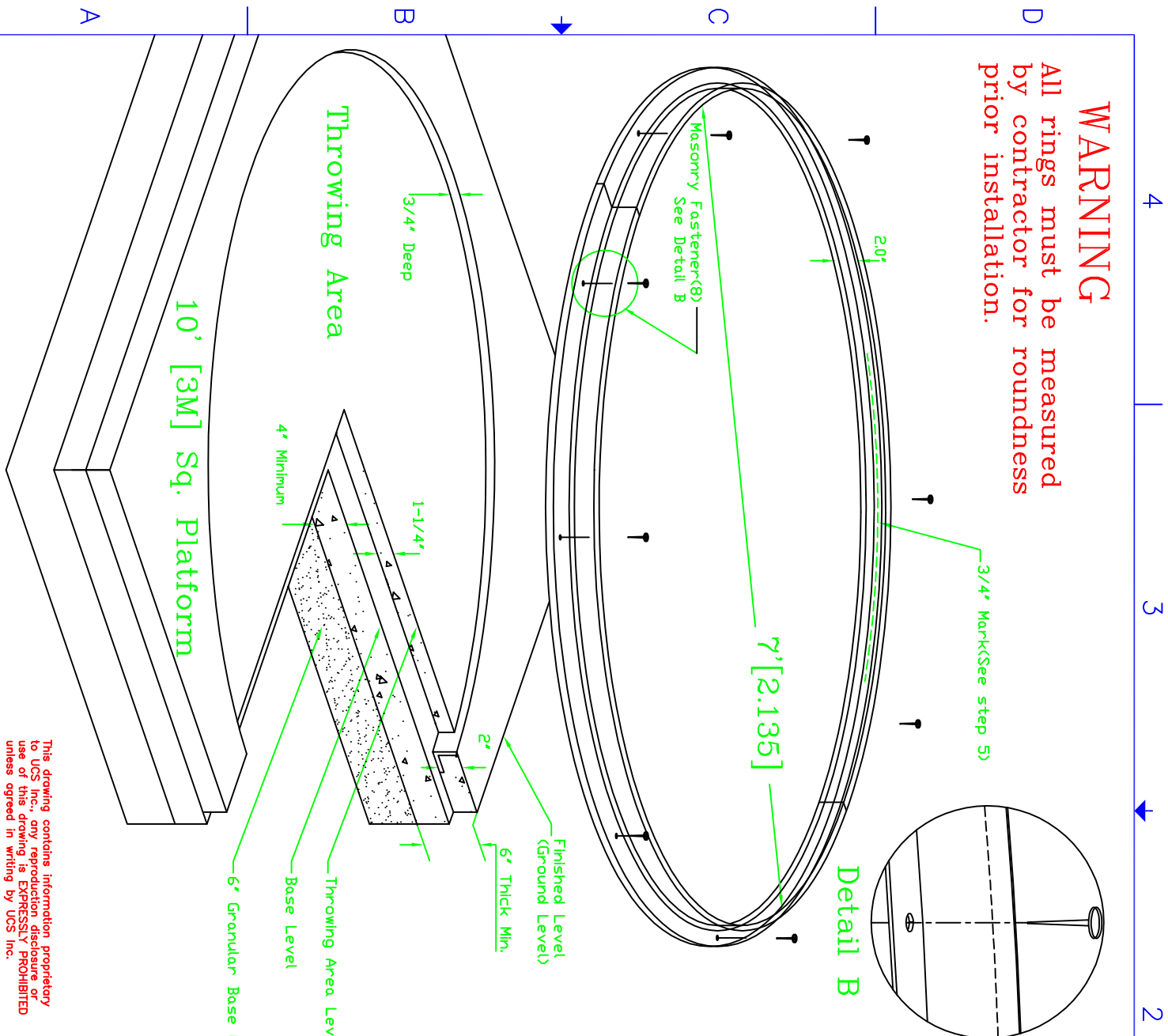


WARNING

All rings must be measured by contractor for roundness prior installation.



Detail B

Installation Instructions for UCS 725 Aluminum Series Rings

- 1) Pour concrete base(10[3M] sq.) to within 2" of finished level(~4")
- 2) Center ring on 10'x10' base, check that it is level, and fasten it down through the 4 holes provided(ramset or other suitable means).
- 3) Clearly mark 3/4" down from the rim, all around on the inside of the rim. This will be the level which to float the cement on the inside.(Throwing area)
- 4) Pour cement to the marked line on the inside and pour cement flush with the rim on the outside of the ring(finished level)
- 5) Allow full cure time for cement

REVISIONS			DATE	APPROVED
ZONE	REV	DESCRIPTION		

UNLESS OTHERWISE SPECIFIED		CONTRACT NO.		UCS 5111 HOFFMAN RD	
DIMENSIONS ARE IN INCHES		APPROVALS		LINCOLN, NC, 28092	
DETAIL TOL. ± 0.005	ANGULAR TOL. ± 1/2°	DRAWN	DATE	TITLE	
5 PLACES ± 0.005		AMBERLY BZ/MS		UCS SERIES 725 ALUMINUM	
MATERIAL:		CHECKED		2" HAMMER RING INST.	
		ENGINEER		SCALE: NONE	
		CHECKED		SHEET NO. 725-2585	
				DWG. NO. 725-2585	
				REV.	
				SHEET 1 OF 1	

This drawing contains information proprietary to UCS Inc., any reproduction disclosure or use of this drawing is EXPRESSLY PROHIBITED unless agreed in writing by UCS Inc.