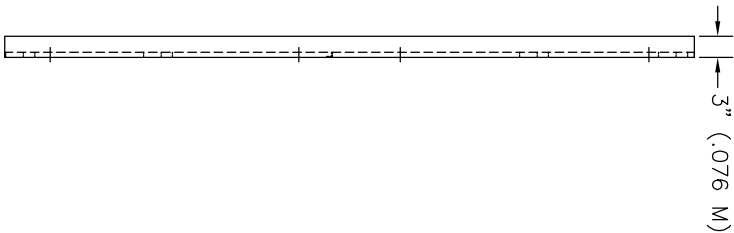
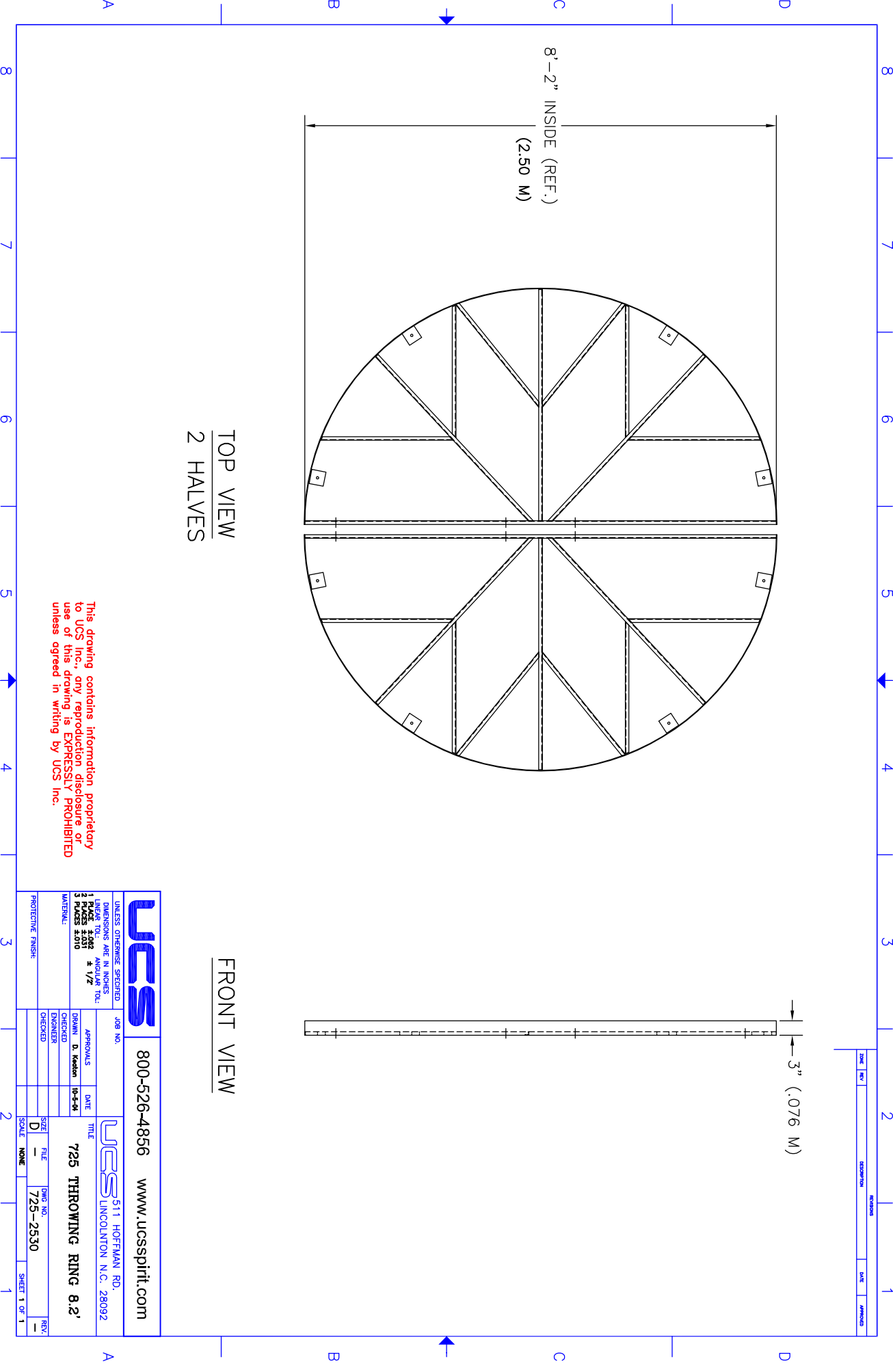


TOP VIEW  
2 HALVES



FRONT VIEW



ZONE	REV	DESCRIPTION	REVISION	DATE	APPROVED

This drawing contains information proprietary to UCS Inc., any reproduction disclosure or use of this drawing is EXPRESSLY PROHIBITED unless agreed in writing by UCS Inc.

		<b>800-526-4856</b> <a href="http://www.ucsspirit.com">www.ucsspirit.com</a>	
<small>UNLESS OTHERWISE SPECIFIED DIMENSIONS ARE IN INCHES. LINEAR TOL: ± .005 HOLE ± .002 3 PLACES ± .010 ANGULAR TOL: ± 1/2° MATERIAL:</small>		<small>JOB NO.</small> <small>APPROVALS</small> <small>DRAWN: D. Keaton</small> <small>DATE: 10-5-10</small> <small>CHECKED:</small> <small>ENGINEER:</small> <small>CHECKED:</small>	
<small>PROTECTIVE FINISH:</small>		<small>TITLE</small> <b>725 THROWING RING 8.2'</b> <small>UCS 511 HOFFMAN RD. LINCOLNTON N.C. 28092</small>	
<small>SIZE</small>	<small>FILE</small>	<small>DWG NO.</small>	<small>REV.</small>
D	---	725-2530	---
<small>SCALE</small>	<small>NONE</small>	<small>SHEET 1 OF 1</small>	