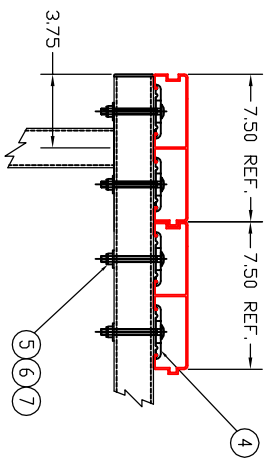
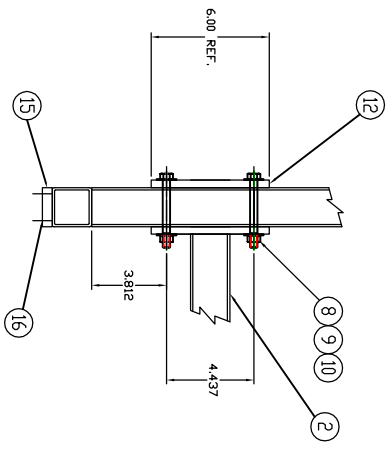
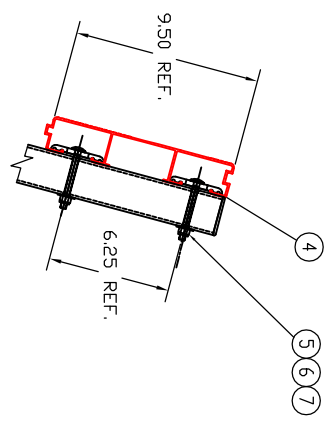
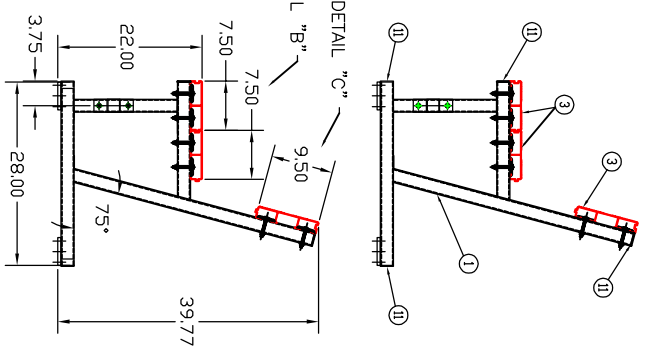
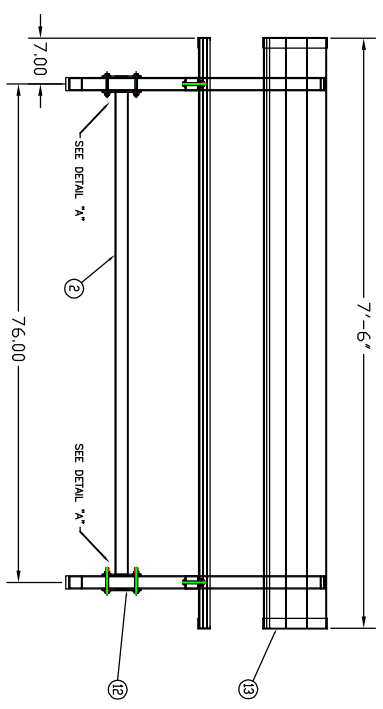


This drawing contains information proprietary to UCS Inc., any reproduction disclosure or use of this drawing is EXPRESSLY PROHIBITED unless agreed in writing by UCS Inc.



ITEM NO.	PART NUMBER	DESCRIPTION	QTY.
16		HARDWARE (GLIDES)	4
15		LEG GLIDE	4
14		3/16 X 3/8 RIVET	8
13		PLANKING END COVER	4
12	525-1215-02-02	BRACE PLATE	2
11		END CAP	8
10		3/8-16 HEX LOCK NUT, ZINC PLATED	4
9		3/8 WASHER	4
8		3/8-16 X 3 1/2 HEX HEAD BOLT, Z. PL.	4
7		5/16-18 HEX LOCK NUT, ZINC PLATED	8
6		5/16 WASHER	8
5		5/16-18 X 2 3/4 CARRIAGE SCREW, ZPL.	8
4		CLAMP	8
3	PLANK 9.5 TG	PLANKING (7 1/2 FEET)	2
2	525-1215-02	BRACE ASSEMBLY	1
1	525-1615-01	LEG ASSEMBLY	2



800-526-4856 www.ucsspint.com

UNLESS OTHERWISE SPECIFIED		JOB NO.	
DIMENSIONS ARE IN INCHES		DATE	
1 PLACE ±.002		DRAWN BY	
2 PLACE ±.010		CHECKED BY	
MATERIAL:		SCALE	
ALUMINUM 6063-T6		NONE	
PROGRESSIVE FINISH		SHEET 1 OF 1	



511 HOFFMAN RD. LINCOLNTON, N.C. 28092

TITLE		PRO STYLE	
BENCH 7.5' WITH BACK REST		DWP NO. 525-1607	
APPROVALS		REV.	
ENGINEER		DATE	
CHECKED		SCALE	

A B C D 8 7 6 5 4 3 2 1

A B C D 8 7 6 5 4 3 2 1