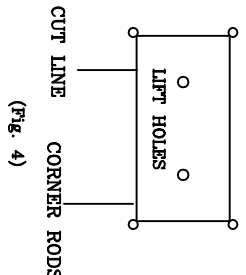
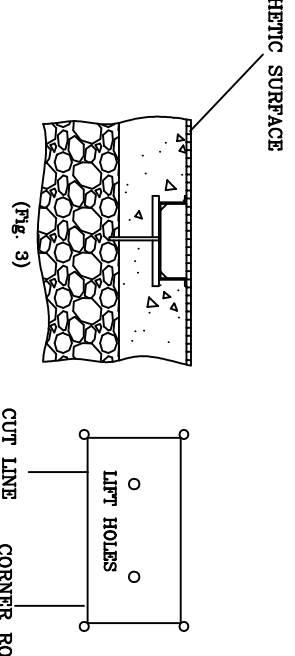
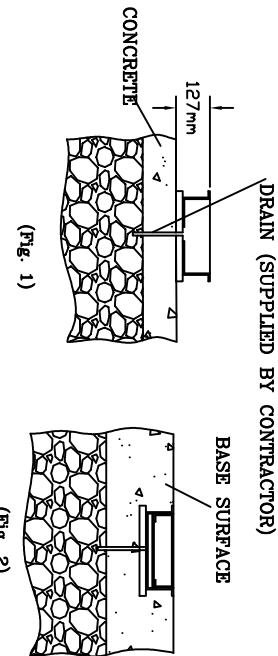
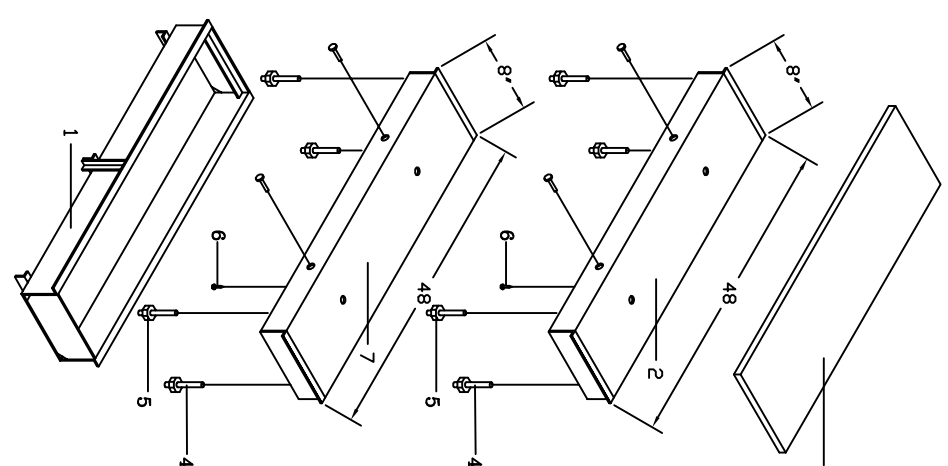


UCS HIGH SCHOOL LONG JUMP/TRIPLE JUMP TAKEOFF SYSTEM INSTALLATION INSTRUCTIONS

NOTE: A PVC drain should be supplied and installed by the contractor when installing the foundation tray.

1. Base of foundation tray should rest on a level concrete surface which is located 127mm below top of base surface and foundation tray. (fig. 1)
2. Lip of foundation tray should be flush with base surface. Check level and pour concrete around tray. (fig. 2)
3. Blanking lid should be prepped to accept synthetic surface. (Adhesive, acid etch, or sand to prep surface)
4. Place blanking lid into foundation tray and adjust leveling screws until lid is level and flush with top edges of foundation tray. (fig. 2)
5. Insert small 2mm dia. rod in each of the four corners of blanking lid to locate cutting lines. Rods must be vertical and extend above top of synthetic surface.
6. Insert large 19mm rod in the two lifting holes. The rods must extend above top of synthetic surface.
7. Pour synthetic surface.
8. After the surface has set use the small rods as a guide for straight edge and cut a rectangular shape to match the blanking board. Use a very sharp blade to assure a clean cut. (fig. 4)
9. Remove all rods so that the blanking lid may be lifted to install the take-off board understructure.

ITEM	PT. NO.	DESCRIPTION	QTY.
1	519-BI21-00	FOUNDATION TRAY BOARD UNDERSTRUCTURE	(1)
2	519-BI021-10	TAKE-OFF BOARD	(1)
3	519-BI21-10A	ADJUSTING AND LEVELING SCREW	(1)
4	---	(3/8-16 X 1 1/2) NUTS (3/8-16) FOR LEVELING SCREW	(12)
5	---	SCREW, WOOD, FLAT HD. #6 X 1 1/2	(8)
6	---	---	(8)
7	519-BI021-10	BLANKING LID	(1)



This drawing contains information proprietary to UCS Inc., any reproduction disclosure or use of this drawing is EXPRESSLY PROHIBITED unless agreed in writing by UCS Inc.

**UCSS** 800-526-4856 www.ucsspart.com

511 HOFFMAN RD. LINCOLNTOWN, N.C. 28092

UNLESS OTHERWISE SPECIFIED, DIMENSIONS ARE IN INCHES	CONTRACT NO.	TITLE
GENERAL TOL. ANGULAR TOL.	APPROVALS	HIGH SCHOOL
2 PLACES ±.010 ± 1/2"	DRAWN V. ANGELLO/EJZAS	JUMP TAKEOFF SYSTEM
3 PLACES ±.010	CHECKED	DWG NO. 519-2300
W/LT.	CHECKED	SCALE NONE
PROTECTIVE FINISH:	DATE	SHEET D 519-2100
		DWG NO. 519-2300

SHEET 1 OF 1